

'Exhibit A' HISTORIC SHOOTING CLUB LOTS

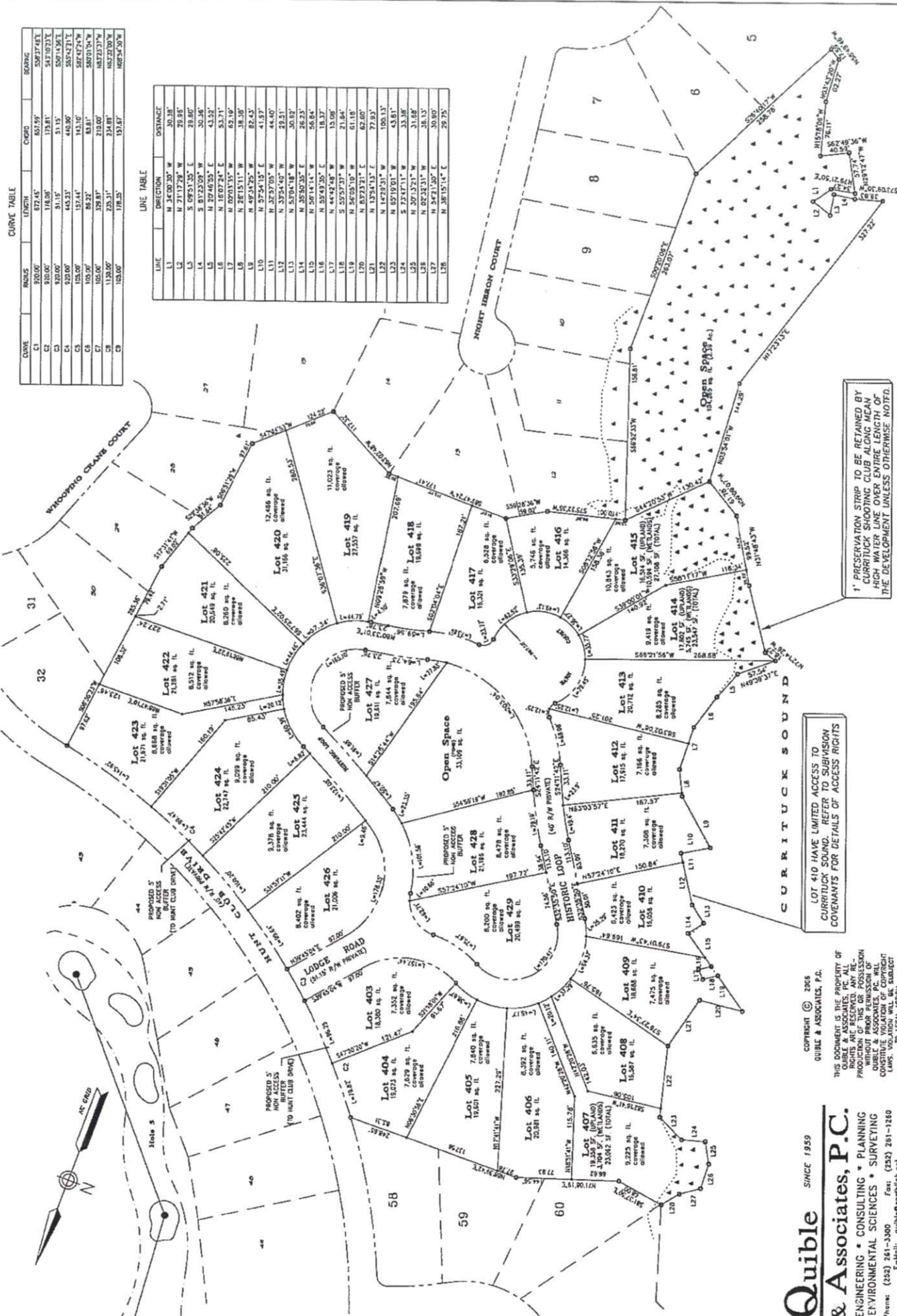
The Currituck Club

CURVE TABLE

CURVE	RADIUS	LENGTH	CHORD	BEARING
C1	320.00'	872.45'	607.93'	S50°37'48"E
C2	320.00'	118.90'	179.81'	S41°10'23"E
C3	320.00'	31.15'	50.91'	S50°14'36"E
C4	320.00'	445.23'	440.90'	S50°42'31"E
C5	125.00'	137.44'	88.22'	S60°10'24"E
C6	105.00'	59.87'	34.00'	S67°23'27"E
C7	1120.00'	235.31'	151.87'	S67°34'30"E
C8	103.00'	178.25'	107.54'	S67°34'30"E

LINE TABLE

LINE	DIRECTION	DISTANCE
L1	N 71°03'38" W	30.38'
L2	N 71°03'38" W	23.93'
L3	S 69°41'52" E	30.30'
L4	S 82°22'03" E	30.30'
L5	N 82°22'03" E	43.52'
L6	N 100°24'1" E	53.21'
L7	N 100°24'1" E	62.10'
L8	N 26°15'11" W	38.30'
L9	N 49°34'29" W	82.43'
L10	N 57°54'19" E	41.57'
L11	N 32°37'05" W	44.40'
L12	N 32°37'05" W	23.51'
L13	N 57°04'18" W	50.82'
L14	N 35°50'35" E	26.23'
L15	N 56°14'14" W	56.64'
L16	N 35°43'20" E	18.37'
L17	N 44°42'48" W	15.00'
L18	S 25°27'37" W	21.84'
L19	N 56°35'19" W	61.18'
L20	N 52°11'11" E	57.90'
L21	N 14°29'23" E	100.33'
L22	N 14°29'23" E	100.33'
L23	N 85°19'01" W	43.81'
L24	S 22°47'01" W	33.98'
L25	N 20°13'21" W	31.88'
L26	N 82°33'31" W	38.15'
L27	N 34°21'20" E	30.80'
L28	N 38°15'14" E	29.75'



1' PRESERVATION STRIP TO BE RETAINED BY CURRITUCK SHOOTING CLUB ALONG MCAN HIGHWAY. ALL OTHER PRESERVATION STRIPS TO BE RETAINED BY THE DEVELOPMENT UNLESS OTHERWISE NOTED.

LOT 410 HAVE LIMITED ACCESS TO CURRITUCK SOUND. REFER TO SUBMISSION COVENANTS FOR DETAILS OF ACCESS RIGHTS

COPYRIGHT © 2016
 QUIBLE & ASSOCIATES, P.A.
 THIS DOCUMENT IS THE PROPERTY OF
 QUIBLE & ASSOCIATES, P.A. ALL RIGHTS
 RESERVED. ANY REPRODUCTION
 OR TRANSMISSION OF THIS DOCUMENT
 WITHOUT PRIOR PERMISSION OF
 QUIBLE & ASSOCIATES, P.A. SHALL
 CONSTITUTE VIOLATION OF COPYRIGHT
 LAWS. VIOLATION WILL BE SUBJECT
 TO LEGAL ACTION.